

BRICK MACHINE



HAOMEI MACHINERY EQUIPMENT CO., LTD

Add: No.14, Shangwu Waihuan Road, New District, Zhengzhou, China

Tel: +86-371-65621392 Fax:+86-371-86616825

E-mail : info@haomei.biz Website: <http://www.haomei.biz>



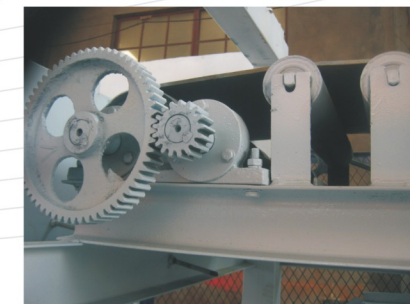
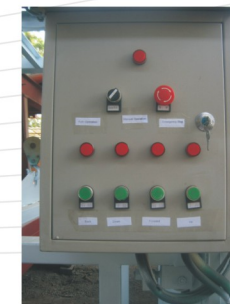
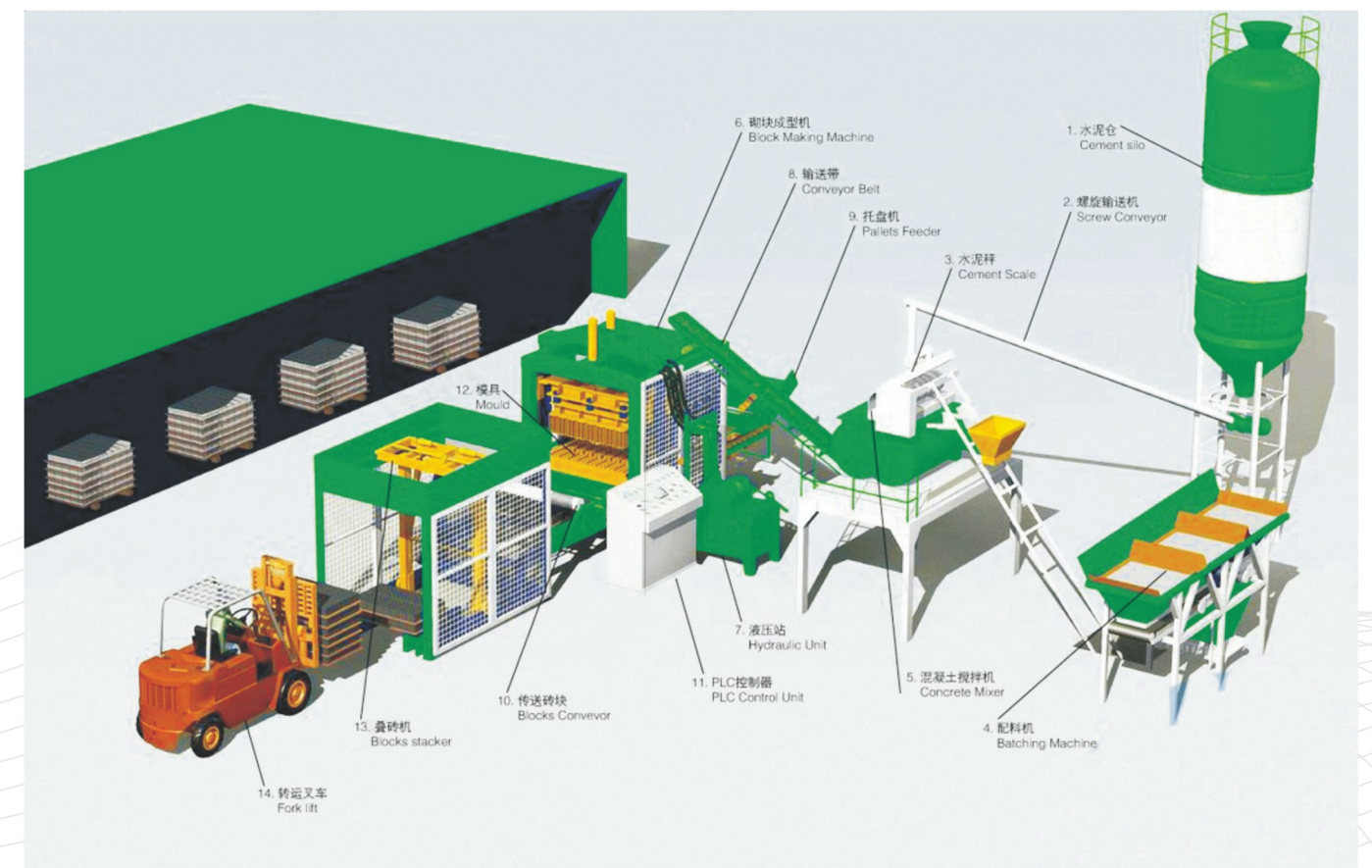
Advantages



- 1. The product uses the hydraulic transmission , design reasonable , stable performance high pressure , high production efficiency , beautiful appearance , simple operation convenient , labor saving and time saving ,labor saving ground brick , then attacking 8-15 layer , without supporting .
- 2. The electric control cabinet with automatic and manual for a tank technology , to achieve the automatic palte in the production of the sudden failure of the case ,to ensure normal production .
- 3. The upper and lower pressure four bar using o molding box , cloth feeding and rotation technique to cloth fast stable in place.
- 4. The body by high strength steel and special welding process , the easy open welding fracture , extremely durable.
- 5. The mold after finishing lathe , using carbon dioxide arc welding technology , to achieve a solid , not broken , not deformation .Paul brick specification accuracy .
- 6. The use of a machine the replacement of mold can produce different specifications of the porous brick , hollow bricks , planting grass brick , brick road and revetment brick and other cement goods
- 7. The raw materials to good performance , advanced hydraulic transmission technology , can use a plurality of multiple(weste ash , waste , construction wasted , river sand , stone powder , perlite)products, high strength , good compactness .Frost resistance , sound insulation , heat insulation,good hezt preservation performance .

Performance and feature

- 1. Classic mode of vibration , it is particular suitable for producing high-strength blocks , standard bricks wiht short molding cycle and high efficiency .
- 2. It takes the most advance moult vibration technology ,with the frequency control of motor speed , powerful force and the forming density products .
- 3. Special systemfor sending the boards can prolong the useful time the boards.
- 4. Automatic PLC control systems , interactive user interface , the control system , security configuration logic control , production procedures and fault diagnosis display function.
- 5. With thelow cost of production , you can use , sand , stone powder , fly ash , slag , and other residue .





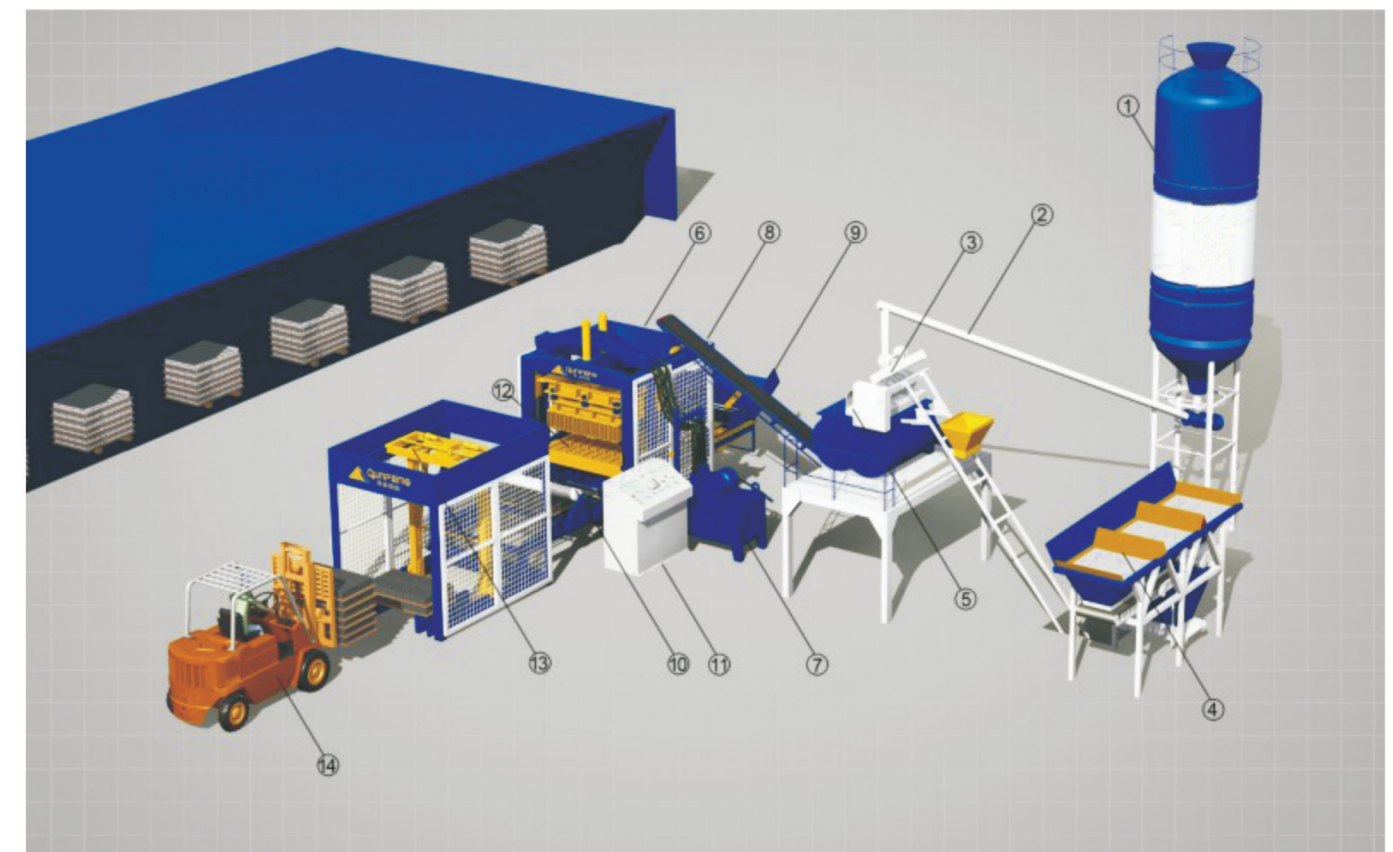
Technical characteristics

- 1. the machine is made of super-strong steel with special welding techniques. So the machine is highly firm and shake-resistant
- 2. Integrative and simultaneous vibration will make the machine have the best solid and pressure effects
- 3. The machine adopts four-pole-orientation, extended and wear-resistant bushing to ensure the right movement of head of mould.
- 4. Adopting orienting way operation, the materials spreader will decrease the friction with mould and have a perfect spreading
- 5. The hydraulic parts is from Taiwan, Japan, and Germany.
- 6. The machine has a high production and good density. The block can be stacked once after being moulding
- 7. The machine has excellent energy-saving quality and it belongs to energy-saving machines
- 8. It uses high emission hydraulic pump and the system can move quickly
- 9. The solid bricks can be stacked once after moulding and then you can avoid the cost for ground pallets and labours 1 to 2 cents.
- 10. Automatic
The machine adopts Siemens PLC control system with program control and automatic diagnostic program to realize the manless operation.
The machine has a good design and simple operation, which will make you feel the value of technology. For her simple operation, modern way of moulding, power-saving and special technology, the value of the machine is higher than price.

model	dimensions	Weight	molding cycle	pallet size	power	the highest frequency
QT3-15	4100 × 1600 × 3000mm	4.5t	15-20S	730 × 580 × 30mm	20kw	4800-5100 (r/min)
QT4-15	5420 × 1550 × 2940mm	6.5t	15-20S	850 × 570 × 30mm	20kw	4800-5100 (r/min)
QT6-15	6350 × 1680 × 2850mm	8t	15-20S	850 × 700 × 25mm	29kw	4800-5100 (r/min)
QT8-15	4750 × 2000 × 2950mm	10t	15-20S	1080 × 700 × 25mm	33.55kw	4800-5100 (r/min)
QT10-15	8200 × 2000 × 2950mm	11t	15-20S	1150 × 840 × 40	36.55kw	4800-5100 (r/min)
QT12-15	8200 × 2300 × 3000	13t	15-20S	1310 × 840 × 40mm	46kw	4800-5100 (r/min)
QT15-15	5700 × 2500 × 3400	16t	15-20S	1320 × 1100mm	48kw	4800-5100 (r/min)

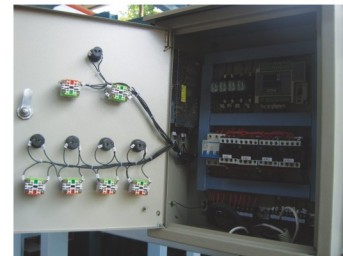
Productivity

model	product name	product specifications	number per plate	block/h	Block/8h
QT3-15	block	390 × 190 × 190		540	4320
	brick	240 × 115 × 90	11	1980	15840
	standard bricks	240 × 115 × 53	22	3960	31680
QT4-15	block	390 × 190 × 190	4	720	5760
	brick	240 × 115 × 90	12--14	2160--2520	17280--20160
	standard bricks	240 × 115 × 53	24--26	4320--4680	34560--37440
QT6-15	block	390 × 190 × 190	6	1400-1080	11520-8640
	brick	240 × 115 × 90	15	3600-2700	28800-21600
	standard bricks	240 × 115 × 53	36	7920-5940	63360-47520
QT8-15	block	390 × 190 × 190	8	1920-1440	15360-11520
	brick	240 × 115 × 90	22	5040-3780	40320-30240
	standard bricks	240 × 115 × 53	45	10080-7560	80640-60480
QT10-15	block	390 × 190 × 190	10	2400-1800	19200-14400
	brick	240 × 115 × 90	27	5760-4320	46080-34560
	standard bricks	240 × 115 × 53	54	12240-9180	97920-73400
QT12-15	block	390 × 190 × 190	12	2160	17280
	brick	240 × 115 × 90	30	7200	57600
	standard bricks	240 × 115 × 53	60	14400	115200
QT15-15	block	390 × 190 × 190	15	2700	21600
	brick	240 × 115 × 90	40	9600	76800
	standard bricks	240 × 115 × 53	80	19200	153600



- | | | | |
|-------------------|------------------------|---------------------|--------------------|
| 1 Cement Silo | 2 Screw Conveyor | 3 Cement Scale | 4 Batching Machine |
| 5 Concrete Mixer | 6 Block Making Machine | 7 Hydraulic Unit | 8 Conveyor Belt |
| 9 Pallets Feeder | 10 Blocks Conveyor | 11 PLC Control Unit | 12 Mould |
| 13 Blocks Stacker | 14 Forklift | | |

Brick palletizing machine



The machine is used to support the block making machine .When it is working , the finished products can be moved from the green block receiver to the stacking machine ,and they will be piled up 3 to 15 layers automatically according to different type of bricks, then carried to the maintaining place by the fork lifter truck . It reduces human labor and ground , and increases the productivity .

model	dimensions	weight	molding cycle	pallet size	power	the highest frequency
QM4-12	3800 × 2400 × 3100mm	10.2t	10-15s	810 × 520 × 25mm	41.5kw	4800-5100r/min
QM6-15	6350 × 1680 × 2850mm	9.5t	15-20s	970 × 680 × 30	29.55	4800-5100r/min

JS mixers

Separate weighing



JS series horizontal double-axe compulsive mixers could mix the hard concrete , plastic concrete , and fluid concrete etc. When it equipped with the PL series automatic batching machine and block making machine .It makes a simple concrete block/brick production line .It is very suitable for the medium or small-sized concrete block / brick factory .

Model	mixing motor power	feeding capacity	discharge capacity	improve motor power	pump motor power	maximum aggregate size	Dimension	shaft speed
JS500	18.5KW	800L	500L	5.5kw	0.75kw	60/80mm	3030x2300x2680	35r/min
JS750	30kw	1200L	750L	7.5KW	1.1KW	60/80mm	4550x2250x2450	30.5r/min
JS1000	37kw	1600L	1000L	11KW	3KW	60/80mm	4640x2250x2250	25.5r/min
JS1500	45kw	2400L	1500L	18.5KW	3KW	60/80mm	5058x2250x2440	23r/min
Js2000	45kw	3000L	2000L	21KW	3KW	60/80mm	6500x3875x11510	35.5r/min



Mixers



LSY TYPE SERIAL SCREW CONVEYOR



LSY series of Screw Conveyor , mainly used for transmitting the cement , fly ash and other materials in the concrete mixing plant .And with characteristic technicality , reliability and practicability

Cement silo



PL Series concrete batching machine

PL Series concrete batching machine is automatic batching equipment for concrete mixer , and can automatically work on batching process of sand and gravel etc . According to mix ratio. This series product adopts electronic balance cumulative measurement and automatic batching monitor .It has features such as high precision , strong suitability , operation convenience and reliable application etc , Mix ratio can be adjusted adjusted easily at random . This series product is suitable for various building sites , concrete precast plant or element plant , and is ideal equipment for productivity improvement , work intensity and concrete quality assurance.



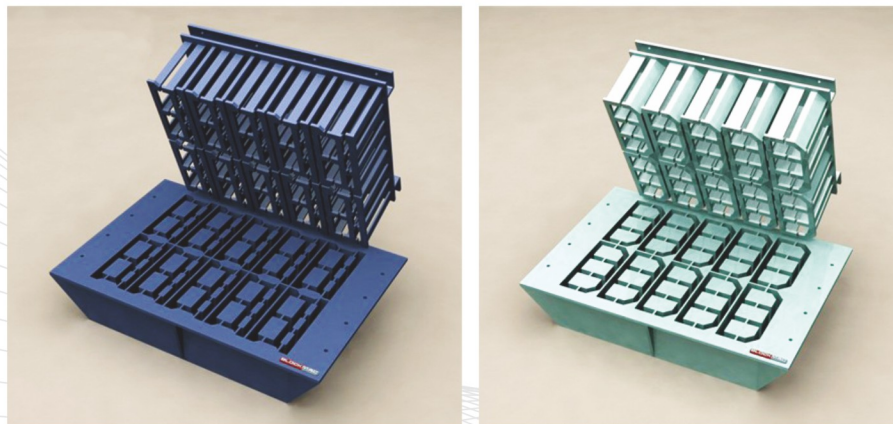
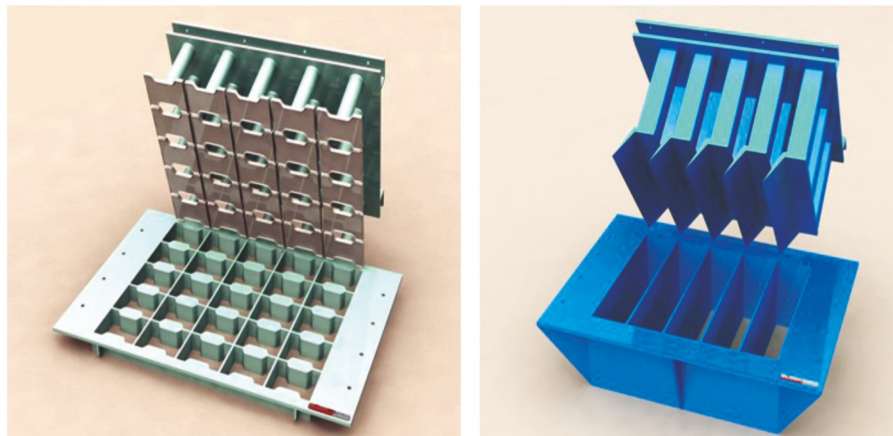
model	weighing hopper capacity	hopper capacity	Precision of Batching	Productivity	Max.capacity	Aggregate types
PLD800	800L	1500Lx2	± 1%	48m³/h	2000kg	2
PLD1200	1200L	2500Lx3	± 1%	56m³/h	3000kg	3

Model	Feeding height	Belt speed	Power	Weight	cycle time	Dimensions
PLD800	2400mm	1m/s	6.6kw	2450kg	60s	5600x1830x2700mm
PLD1200	3000mm	1m/s	12kw	4500kg	60s	9000x220x600mm

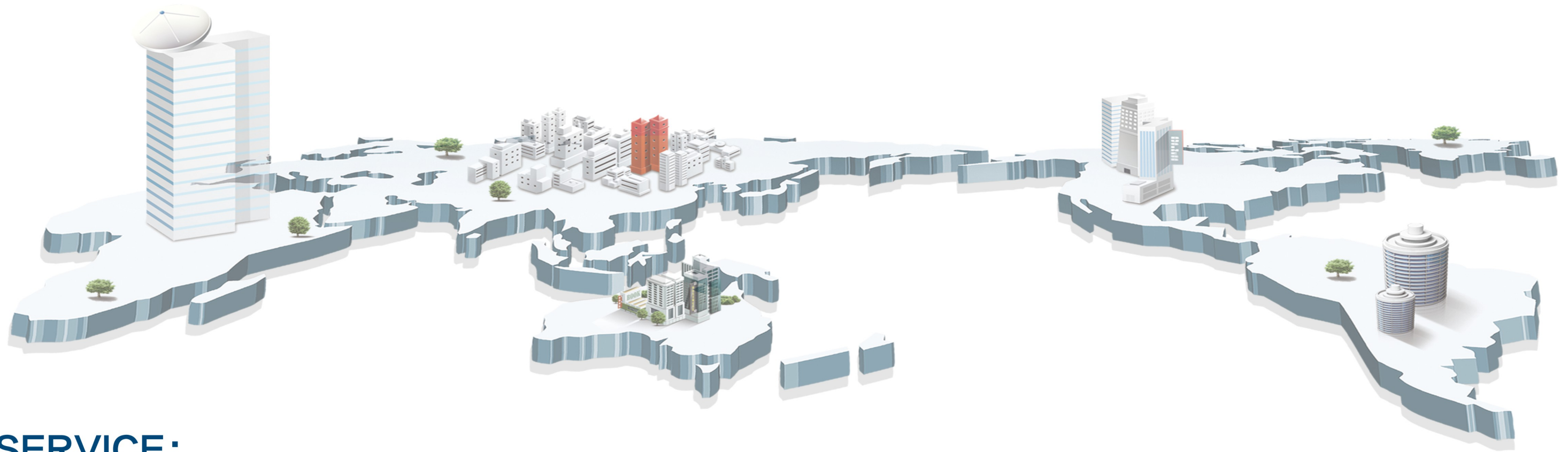


Mold

Performance and feature



QSZ01 190X240X190	QSZ02 390X240X190	QSZ03 390X190X190	QSZ04 390X190X190	QSZ05 390X190X190
QSZ06 240X115X90	QSZ07 390X120X190	QSZ08 390X120X190	QSZ09 390X90X190	QSZ10 240X240X90
QSZ11 240X240X90	QSZ12 240X180X90	QSZ13 240X180X90	QSZ14 240X150X90	QSZ15 190X190X190
QSZ16 240X115X90	QSZ17 390X115X90	QSZ18 190X190X190	QSZ19 190X190X190	QSZ20 190X190X190
QSZ33 400 x 200 x 200	QSZ34 400 x 200 x 200	QSZ23 240X115X53	QSZ26 250X250X80	QSZ27 390X112.5X190
QSZ28 200X100X80	QSZ29 250X150X80	QSZ30 240X180X90	C1 400X400	C2 400X400
C3 400X400	C4 400X200	C5 600X400	C6 400X400	C7 300X300
B15 1000X500X200	B13 1000X300X120	B19 1000X350X150	B20 600X500X300	B28 弧形溝槽石
B3 500X350X350	B8 1000X300X120	B9 1000X220X200	B11 900X500X120	B12 1000X350X120



SERVICE:

Pre:

1. to guide customers to choose the most suitable equipment .
2. Free of charge to professional engineering and technical personnel to the site for users planning , design the best site peoduction process.
3. According to the different requirements of customers , design and produce your required products .

Sale:

1. The production process in strict inspection of parts .
2. In according with the contract on time delivery

Customer service:

1. Assigned to the professional and technical personnel , to the scene to guide customers to install.
2. Be responsible for equipment debugging .
3. Responsible for on-site training operations and technical personnel .
Complete sets of equipment after installation , the company designated professional and technical personnel all year round to provide technical services , until the user satisfaction.

